

## Overview

E.ON  
Westfalen Weser AG  
Quality of the master data as a critical factor in the mass restructuring of SAP data.

## Requirement

IT service provider E.ON IS requires flexible control of the restructuring results.

## Solution

Condense ad-hoc analyses and visualize large quantities of data.

## Uses

InfoZoom helps to find causes for inconsistency in the data set.

Quality management for IT projects – from the actual status analysis to the results documentation.

Analyses which do not require programming save time in IT projects.



# Save ad hoc analyses Quality in master data management

*"Part of master data management in IT projects is ensuring and checking the consistency and quality of master data. At E.ON Westfalen Weser AG, there was also a mass restructuring of SAP data, the results of which had to be checked. This task was supported using a tool for ad hoc data analyses, which reduced the time required for evaluations and helped to answer questions regarding data quality after the restructuring process was complete."*

Harald Talarczyk, specialized journalist, Bonn, Germany

In the energy and utility industry in particular, it is important to keep an eye on the structure and quality of master data due to the vast quantity of data. The amended German Energy Industry Act [Energiewirtschaftsgesetz] forced many suppliers to restructure their master data: It stipulates that electricity and gas must be transmitted and distributed in the network separately from generation, as well as from trade and sales (unbundling). For this reason, even at E.ON Westfalen Weser AG, the two market roles of 'network' and 'sales' have been

*"Part of restructuring was the creation of hundreds of thousands of contracts."*

*"The effects of the mass restructuring had to be checked."*

fulfilled by different companies since the start of 2007. Since then, data and processes in the SAP accounting system IS-U have been mapped separately – in compliance with the so-called 'two-contract model.'

Until mass restructuring was performed, the public utility company's SAP IS-U system only contained contracts with end-consumers. At the start of 2007, each fully supplied meter point in the electricity and natural gas division was expanded by one more contract for the 'network account' to map the contractual relationships between E.ON Westfalen Weser Netz GmbH as network operator and its associate suppliers. IT Management was supposed to create a new company code in IS-U for these contracts and for the grid company (Hamelin) that has been in existence since the start of 2007. The contractual data for the 'sales' company code had to be kept: E.ON Westfalen Weser AG (Paderborn) is responsible for this data which concerns the contractual relationships between supplier and end-consumers.

To plan and implement the mass restructuring, an IT service provider that specializes in the energy industry was engaged along with E.ON IS GmbH.

*"The contracts for the electricity and natural gas division had to be adapted in accordance with the particular supply scenario as part of system restructuring," said Gerd Geib, 'Billing' sub-project manager at E.ON IS.*

Specifically, the existing contracts for both divisions had to be changed into supply contracts and hundreds of thousands of network contracts had to be created. Furthermore, pure network usage contracts and supply contracts under the previous company code had to be closed, the accounts settled, and re-mapped under the new network company code.

The SAP tool CCW (Contract Conversion Workbench) was designated for the restructuring of the system itself, as well as for logging it. A tool was also required that could provide a quick overview of the actual results of restructuring.

*"We chose the tool InfoZoom because it enables us to analyze greater quantities of data ad-hoc and, at the same time, it is also transparent," says Gerd Geib.*

By the start of January 2007 we were ready: The SAP master data had been completely reconstructed in the live system. The InfoZoom analyses, which had already supported error analysis during the tests, also helped to monitor data quality as part of the acceptance process. For this purpose, relevant technical master data from the SAP system (e.g., plant data and meter point data) was selected beforehand, in addition to commercial product data, contractual data, and accounting data, and imported into InfoZoom. 30 individual attributes were read out for each of the almost two million contracts (all divisions): These included deregulation master data for individual contracts, plants, and meter points, as well as attributes

that control a number of processes – such as billing, invoicing, and electronic data exchange with market partners.

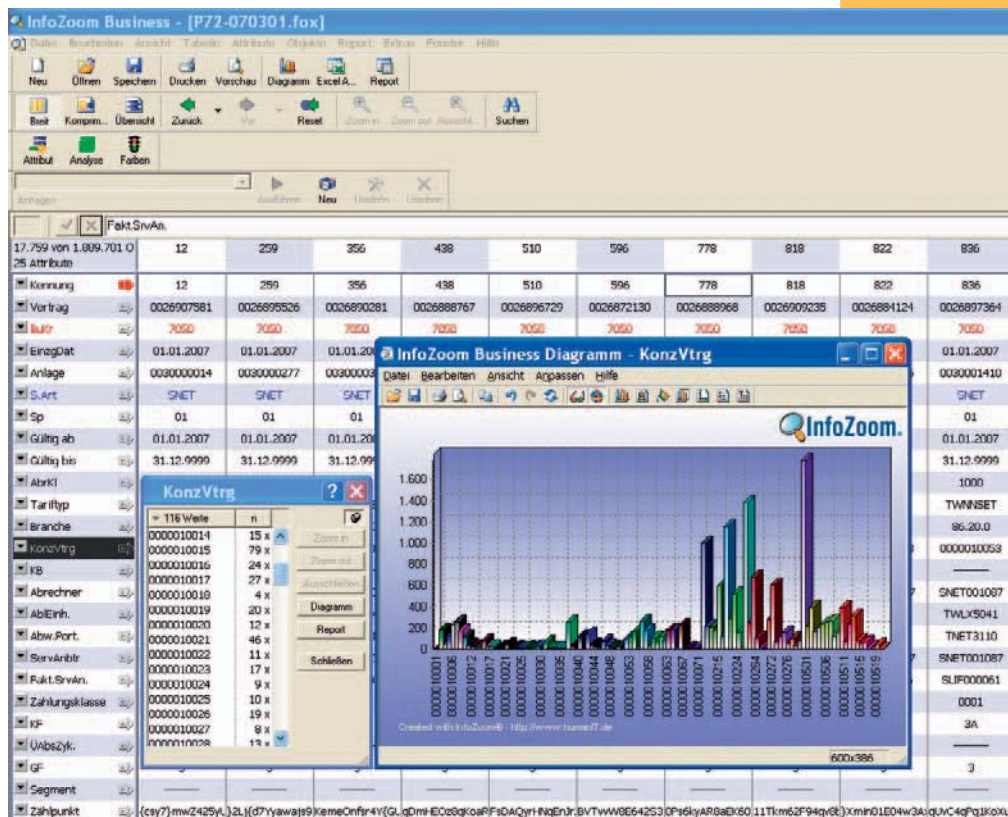
InfoZoom helped to check the results of restructuring and detect causes of inconsistencies in the data set. One task was to monitor to what extent master data sets had been equipped with new or changed attributes, according to the specifications provided to the CCW team. If gaps were detected, the reasons for them had to be analyzed, as well as the context. According to Gerd Geib, the option for compressing and visualizing large quantities of data contributed greatly to the cause study process:

*"In a compressed view, we filtered out all data sets that were only equipped with one single network contract or sales contract after system restructuring was completed. As part of this data selection, we searched for further values which could explain the lack of a second contract, i.e., characteristics of linear attributes. We were able to detect and rework irregularities very quickly."*

*"Interrelations between analysis attributes and their properties can be recognized quickly."*

InfoZoom displays database attributes in a linear way and makes it possible to compress the values of otherwise unmanageable quantities of data sets in cells. This means that views of even large quantities of data can be selectively displayed and hidden. This enables interrelations between an existing data selection and other data cells to be determined, which can be compressed or uncompressed (using the built-in zoom function) as needed.

*InfoZoom presents compressed data in the form of appealing diagrams and reports.*



Further analyses provided an overview of the number of contracts concluded with individual contracting parties and network operators. It was also possible to determine the distribution of meter points per market partner according to tariff types and concession contracts. Gerd Geib says:

*"With InfoZoom almost any data element contained in the data structure can be analyzed in relation to all other data elements contained in the data structure at high speed. Each field in a data structure can be checked in a few minutes with regard to a wide variety of questions."*

At the same time as the results of restructuring were analyzed, a large number of tests were performed by SAP users: They checked whether all functions and processes in the restructured system were functioning smoothly.

According to Gerd Geib, in terms of managing master data, the advantages of the software are primarily revealed when a number of questions have to be answered when analyzing large quantities of data. With InfoZoom no programming is required for individual analysis reports, which are created directly in the SAP system and can often be aimed at answering just one or a few questions.

*"In the case of E.ON Westfalenweser AG, I estimate that the time we have saved by using the tool, in comparison to conventional tools, is approximately 80%. For future IT projects we are therefore planning to use this tool not only to analyze results, but also for the actual status analysis at the start of the project," said the consultant.*

E.ON Westfalen Weser AG also uses InfoZoom to manage customer data: For example, based on data extracted from SAP IS-U, the company checks the consistency of accounting data, as well as the quality of data that has been exchanged with market partners electronically and using standardised formats (EDIFACT).

*"80% less  
time required  
for analyses."*



#### Further information

INDEX GmbH  
Gert Serwas  
Im Zollhafen 24  
50678 Cologne – Germany  
Tel.: +49 221 8300 8887  
Fax: +49 221 8300 8889  
[info@infozoom-software.com](mailto:info@infozoom-software.com)  
[www.infozoom-software.com](http://www.infozoom-software.com)